



Christchurch City.

THE LOCAL'S GUIDE TO CHRISTCHURCH

You may find yourself in Christchurch before or after your New Zealand Trails adventure. We want to save you time researching by letting you know some of our favourite places in Christchurch! We've compiled a guide of all our favourite bars, cafes, trails and things to do in the area. As Kiwis, these are the places we can be found indulging, tramping (the Kiwi word for hiking) and sipping on our favourite coffees! With the help of this handy guide, we hope that you will have the most incredible day(s) exploring the city.

Breakfast, Brunch and Lunch



Unknown Chapter

254 St Asaph Street

One of our favourite brunch spots in Christchurch is the bustling coffee roastery, cafe and wholesaler, Unknown Chapter. If you consider yourself a coffee connoisseur, this is the spot to chat beans! They roast on site and experiment with each new coffee to find that special something. They also pride themselves on their homemade goodies! You can't go wrong with their classic breakfast of free range bacon, pork and apple sausage, poached eggs, field mushrooms, roast tomatoes, potato rosti, and delicious toasted sourdough. Visit their website [here](#).



Addington Coffee Co Op

297 Lincoln Road

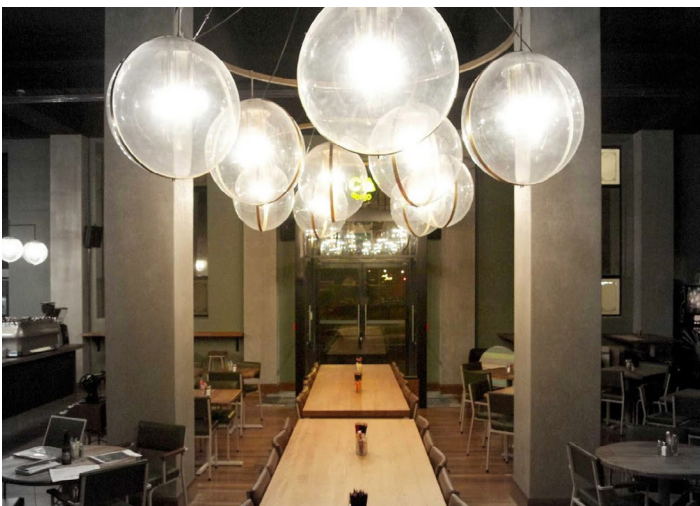
If you are looking for an establishment toppling with character, you'll enjoy Addington Coffee Co Op. We love their ethos to create a place of 'belonging for the local community'. They want to change how business is done by reinvesting profit to create 'good jobs, good choices and good communities around the world'. But enough about their business model, how's their food? The answer is simple, it's delicious! They serve house roasted Jailbreaker Coffee, a cabinet full of baked delights and a legendary breakfast/brunch menu. Visit their website [here](#).



Portershed

322 Lincoln Road

This café is pretty special. All its food is 100% plant-based. If you love a bit of bacon for breakfast, please don't be deterred by the vegan stamp, the food is incredible. We promise you won't miss your meat here. Portershed is an authentic, vintage specialty café that you could easily while away the hours in sipping coffee and getting stuck into a good book. It's also the People's Choice National Winner for 'Cafe of the Year'. Visit their website [here](#).



C1 Espresso

Old Post & Telegraph, Office building 185 High Street

C1 Espresso is an iconic Christchurch café renowned for their pioneering espresso, big breakfasts, and vibrant atmosphere. C1 proudly produces many of its own products in-house and at the heart of our café is their passion for quality. Grab a coffee made to perfection by one of their talented baristas or order a burger or some fries, delivered to your table through pneumatic tubes. Learn more about C1 Espresso on their website [here](#).

Dinner



The Little High Eatery

255 St. Asaph Street

Looking for a casual lunch or dinner spot with lots of choice? The Little High Eatery is like a high end food court. Experience eight unique local and family-run businesses inside. With everything from woodfired pizza to soulful Thai food, you're sure to find something to delight your palate. Visit their website [here](#).



Riverside Market

Corner of Lichfield Street & Oxford Terrace

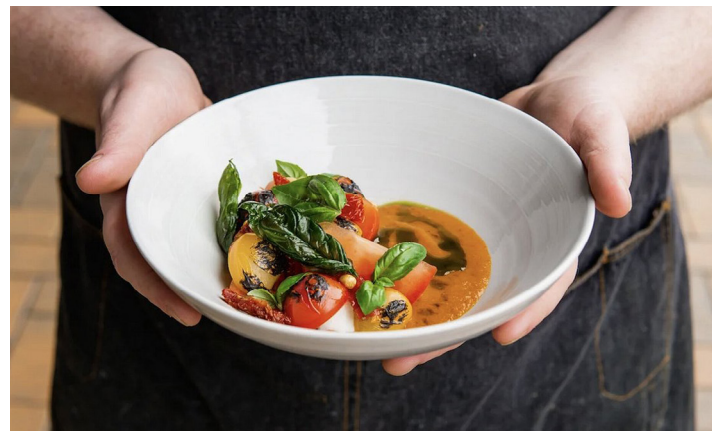
Another more casual dining experience with ample choice is the Riverside Market. You'll be spoilt for choice amongst this network of boutique retail, restaurants, cafes and bars. With over 30 independent food outlets, this is the spot to be for foodies everywhere. Visit their website [here](#).



Town Tonic

335 Lincoln Road

For a more formal and chic dining experience, we love Town Tonic. A seasonal menu delivered with finesse, we guarantee you'll be impressed. We suggest trusting the chef and dining off a degustation menu. They also have an extensive wine list to try some of New Zealand's best. Visit their website [here](#).



Rascal

225 High Street, Christchurch Central City,

Rascal is a modern bistro, bar + cafe located in the heart of Christchurch. Their menu reflects the season, serving fresh, fun food + drinks. The Rascal way of dining is all about sharing. Everything is designed to be sampled by the table, and dishes arrive as they are made. It's a social affair in every way, with casual, attentive service that makes sure everyone is well looked after. Visit their website [here](#).

Trails & Activities



Rapaki Track

The Rapaki Track is local's favourite. At 3.5kms (2miles) long, it makes for a great morning walk, taking in stunning views of Lyttelton Harbour and the volcanic peaks of Banks Peninsula. If you want something more challenging, you can extend the walk by returning via the Huntsbury Track. Find out more about the Rapaki Track [here](#).



Christchurch Gondola

For the best views of the city, the stunning Southern Alps, vast Canterbury Plains and the Pacific Ocean, Christchurch's gondola is just the ticket. If you want to earn your views, we recommend walking up the Bridle Path (2.4km/1.5miles) and taking the gondola back down for the best of both worlds. For more information, check out the [Christchurch Gondola website](#).



Visit the markets

Our favourite thing about Christchurch is the incredible little markets dotted all over the city. Some of our favourites include [Lyttelton Market](#), [Lyttelton Treasures Market](#) and [New Brighton Seaside Market](#). These three run every Saturday. Another is the [Christchurch Farmer's Market](#); it is a firm favourite amongst the foodies.